

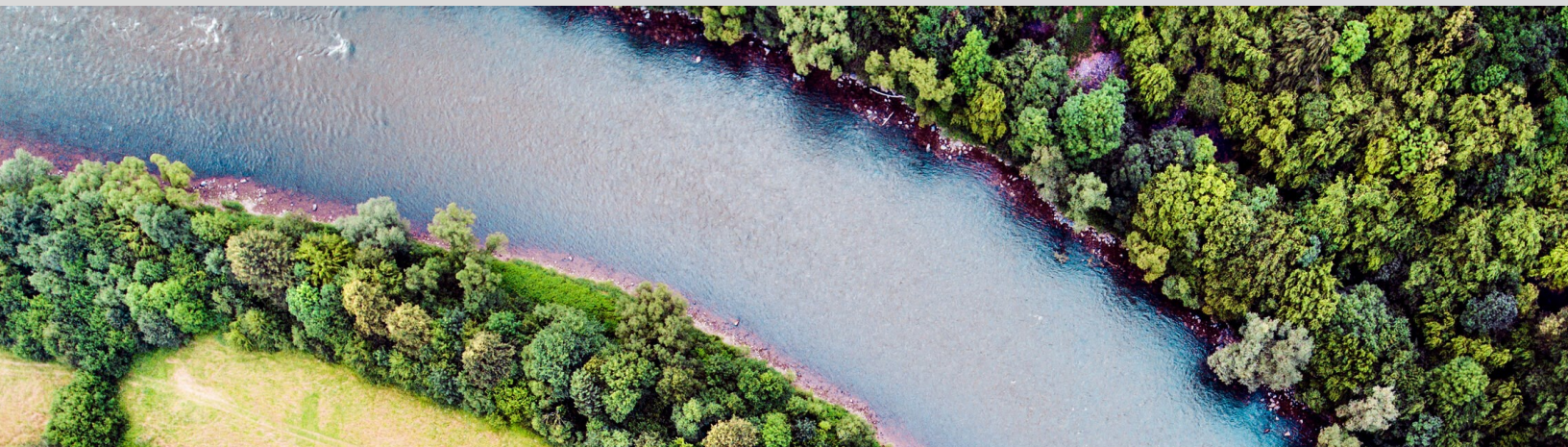


## NEPA COMPLIANCE

The National Environmental Policy Act (NEPA) was signed into law on January 1, 1970. NEPA requires an assessment of the environmental effects of certain proposed actions. The range of actions covered by NEPA is broad and includes the following:

- making decisions on permit applications,
- adopting federal land management actions, and
- constructing highways and other publicly-owned facilities.

ELOS is an expert in assisting clients in navigating the often-complex NEPA process. ELOS can evaluate the environmental and related social and economic effects of proposed actions and assist clients in steering their projects to minimize impacts and facilitate successfully navigating NEPA compliance. As part of the NEPA requirements, we can also coordinate all public review and comment periods on those evaluations.



### INTERDISCIPLINARY TEAMWORK

ELOS scientists provide specialized experts in the fields of archaeology and cultural resources, wetlands ecology, wildlife biology, botany, water quality, watershed hydrology, and spatial analyses and mapping.

These experts support Interdisciplinary Project Teams to develop and analyze projects, alternatives, and creative impact avoidance, minimization, or mitigation techniques.

# Areas of Expertise

ELOS's areas of expertise which support NEPA compliance include:

- Development and Analysis of Alternatives
- Agency Coordination
- GIS Mapping and Analysis
- Coastal Zone Management Consistency Evaluations
- Cumulative Impact Analyses
- Threatened and Endangered Species Assessments and Coordination
- Environmental Justice Analysis
- Fish and Wildlife Coordination Act Reports
- Mitigation Plans
- Public Involvement Planning and Implementation
- State Historic Preservation Office (SHPO) Coordination
- Air Quality
- Wetland Delineations and Permitting
- Wetland Value Assessments
- Project Administrative Record Documentation

## EXAMPLES OF NEPA DOCUMENTATION REQUIRED BY FEDERALLY-FUNDED PROJECTS INCLUDE:

- Environmental Assessments
- Environmental Impact Statements
- Findings of No Significant Impact
- Environmental Review Records
- Environmental and Historic Preservation Checklists
- Categorical Exclusion Determinations